




TOUR DE BLOOM

Technical Guide
USAC Amateur
May 2-4, 2025





Welcome riders!

Wenatchee Valley Velo Club extends a huge welcome to the 2025 Tour de Bloom Stage Race! We hope you enjoy the events. We appreciate your commitment to Pacific Northwest bike racing.

Your participation benefits our kids' riding safety program, *Lidz on Kidz*, putting 750 bike helmets on children, and benefits adding signage for a bike route from Leavenworth to Wenatchee.

The 2025 edition of the Tour de Bloom takes on a new twist with the introduction of the UCI Women 2.2 race. That means there are a few changes for the other categories to accommodate the growth of Professional Women's racing in the US. The UCI Women Elite and Men Pro-1-2 races are 5 stages, while the rest of the categories are held over the first 3 days. Come and stay to watch the Pros race or pick up a corner to marshal on their Time Trial or Ed Farrar Road Race!

- Our race categories are a bit streamlined so there is less overtaking on the roads, and we're changing to a Points-based Stage Race" format for some of the amateur categories. One fee, but race what you want, but there are penalties for not starting a race.
- Everyone starts with the Still Properties Waterville Road Race.
- For the Amateurs, we're giving you a real chance to show your climbing skills with the Mission Ridge Ski and Board Resort Mass start Hill Climb on Saturday morning.
- The downtown Rookard Pools criterium with its fantastic crowds is held Saturday night.
- Sunday finishes off with the Arlberg Sports Plain Road Race.
- As part of our continued dedication to Women's racing, we're offering incentives to Novice Women with free entries.

If we can be of help, please don't hesitate to contact us.

Best regards,

Ace Bollinger

Race Director – tdbace@gmail.com

509-679-5003

Thank you for making Tour de Bloom part of your 2025 race season!

Tour de Bloom

TABLE OF CONTENTS

EVENT STAFF	- 4 -
RACE SERVICES	- 4 -
RACE OFFICIALS	- 5 -
SUMMARY OF START TIME & DISTANCES (MILES OR TIME)	- 5 -
1. RACE HEADQUARTERS	6
2. HOUSING.....	6
3. WEATHER.....	6
4. ORGANIZATION	6
5. TYPE OF EVENT	6
6. PARTICIPATION.....	6
7. PACKET PICK-UP	6
8. REGISTRATION AND ENTRY FEES.....	6
9. AMATEUR VENUES	6
10. FOREIGN RIDERS.....	6
11. TEAM PARTICIPATION.....	6
12. IDENTIFICATION NUMBERS.....	7
13. TECHNICAL SUPPORT	7
14. FEED/LITTER ZONES.....	7
15. CONTROLS & SIGNAGE.....	7
16. PENALTIES.....	7
17. CENTERLINE REGULATION.....	7
18. STARTS AND SIGN-IN.....	7
19. POINTS STAGE RACES	7
19.1. POINTS ALLOCATION	8
20. TIMED STAGE RACES	8
20.1. TIMING PROCEDURES	8
20.2. BONUSSES	8
20.3. FINISHING LIMITS.....	8
21. MISHAPS IN THE FINAL 3KM	8
22. RESULTS	8
23. MISSION RIDGE SKI AND BOARD RESORT MASS START HILL CLIMB SPECIAL REGULATIONS.....	9
23.1. EQUIPMENT.....	9

Tour de Bloom

23.2. SUPPORT.....	9
24. AWARDS CEREMONIES	9
25. MEDIA	9
26. ANTI-DOPING.....	9
27. PRIZES	10
28. RACE RESTAURANTS.....	10
29. MEDICAL HOSPITALS AND MEDICAL	11
STAGE 1 - WATERVILLE ROAD RACE.....	12
STAGE 2 - MASS START HILL CLIMB.....	16
STAGE 3 - WENATCHEE TWILIGHT CRITERIUM.....	18
STAGE 4 - PLAIN ROAD RACE.....	20

EVENT STAFF			
Race Director	Ace Bollinger	Technical Ops & Teams	Dot Abbott
Project/Venue Directors:		Financial Director	
Waterville Road Race	Lars Hakensen	Operations/Housing	Kristin Poulter
Hill Climb	Steve Johnston	Sponsor Fulfillment Coord	
Wenatchee Criterium	Al Creek	Driver Coordinator	Greg Brown
Plain Road Race	Craig Still	LWFR Coordinator	Marci Scott
Criterium Media	Endsley & Company	Sponsoring Team	Wenatchee Valley Velo
Race Media Production	Howell at the Moon	Vol. Coordinator	Adria Still

RACE SERVICES			
Registration	Dot Abbott	Timing	Jesse Carnes
Results	Competitive Timing	Radio Tour	Dot Abbott
Neutral Support	Arlberg Sports	Pro Race Regulator	Tod Manning
Security	Wenatchee Police	Medical Services Lead 1	Tom Ettinger
Race Photographer	Truong Nguyen	Medical Services Lead 2	Shawn Ballard
Merchandise Coord	Nalini Paton	Ambulance	Ballard Ambulance
Podium Production	Mia Bollinger		

RACE OFFICIALS

President of Commissaires	Wade Schulz	Chief Judge USAC Races	Karla Gendler
USAC Jury Panel Member/Moto Comm	James Abbott	Apprentice Judge	Isabelle Mejia
USAC Jury Panel Member/Comm	William Hall	Assistant Judge	Scott Sturgis
Commissaire	Zachary Maino	Assistant Judge	Juan Mejia
Commissaire	Steve Crews	Hill Climb Judge	Jeff Aurand
Motor Commissaire	Robert Velez		

SUMMARY OF START TIME & DISTANCES (MILES OR TIME)

Day	Friday RR	Sat	Sat Crit	Sun RR	Mon ITT	Tue RR
CATEGORY	Waterville	Hill Climb	Wenatchee	Plain	Pro ITT	Ed Farrar
Elite Women UCI	9:00 59 mi		19:45 55 min	9:00 50.7	11:00	12:00 59.7
Master B: 40+ 4/Novice						
50+ 3-4-Novice	9:15 59 mi	4.25	15:30 25 min	9:20 50.7		
60+ Open						
Women 2-3	9:20 59 mi	4.25	17:20 45 min	9:25 50.7		
Women 4-Novice	9:25 30 mi	4.25	15:00 20 min	9:30 26.2		
Elite Men P-1-2	13:15 88 mi		21:00 60 min	13:00 75.2	14:00	8:00 59.7
Master A: 35+ 1-2-3						
50+ 1-2-3	13:25 59 mi	4.25	18:15 45 min	13:10 75.2		
Men 2-3	13:35 59 mi	4.25	17:20 45 min	13:20 75.2		
Men 4 /Novice	13:45 59 mi	4.25	16:05 25 min	13:30 50.7		

Presentation of Teams Downtown Wenatchee – Friday 19:30-20:30 May 2

UCI Women Teams presented in inverse “Caravan Order”

Food, beer garden, live music in the park, team signatures opportunity

A special thanks to the Washington State Patrol, WADOT, Douglas County, and the local municipalities of Waterville, Wenatchee, and Plain for their assistance.

Tour de Bloom - Regulations

1. RACE HEADQUARTERS

Race headquarters are open starting Thursday May 1 from 2:30 PM - 7:00 PM. It is located at:

Arlberg Sports
Grand Central Building
25 N. Wenatchee Ave.
Wenatchee, WA 98801

Race entry acknowledges that you have read this technical guide. You will be required to show your current USA Cycling (or Federation) racing license at bib pick up. **Please take a screen shot of your license showing your name, age, team, and category.**

2. HOUSING

RACE HOTEL

Holiday Inn Express
1921 N Wenatchee Ave
Wenatchee, WA 98801
Online Reservation with Race Discount!

Camping is also readily available in the area. Host housing is reserved for the UCI Women's 2.2 race.

3. WEATHER

May is typically sunny and warm in the Wenatchee Valley. But prepare for cool mornings and evenings, and considerable variation in the weather between stages. The weather on Stage 1 will quite likely be a bit different than what is encountered on the final stage. Come prepared for any type of weather! We've had everything from a snowstorm to upper 90s.

4. ORGANIZATION

Tour de Bloom is organized by the Wenatchee Velo Cycling Team under the regulations of USA Cycling. Permit # 2025-10185. The Amateur races are held May 2-4, 2025, in the Wenatchee Valley.

5. TYPE OF EVENT

The event is classified under USA Cycling regulations as a Regional-A Timed Stage Race (SR) or Points Stage Race (OM) as further indicated.

6. PARTICIPATION

Race Together/ Separated Prizes: Groupings race together with independent results. At least 10 riders per age grouping are required for separate results and prizes. Categories with fewer than 10 riders will be combined as best appropriate. Results containing Masters will reflect the racing age of riders even if there are not separate prizes or podiums.

- Group 1 SR: **Master A:** Men 35+ 1-2-3 & 50+ 1-2-3
- Group 2 OM: **Master B:** 40+ 4/N, 50+ 3/4/N, & 60+ Open

Single Category Races – one set of results, “best of” prizes for Women Masters 35+ 1-2-3:

- SR: Women Cat 2/3 & Women Masters 35+ 1-2-3
- SR: Men Category 2-3
- OM: Women Category 4-5
- OM: Men Category 4-5

7. PACKET PICK-UP

Thursday May 1
5:00 PM – 7:00 PM
Packet Pick up

Arlberg Sports 25 N. Wenatchee
Ave, Wenatchee, WA

8. REGISTRATION AND ENTRY FEES

Register for Tour de Bloom online at BikeReg.com. Register early! We anticipate fields to fill quickly. **There will be no registration available after the start of the Waterville Road Race.** You must register for the entire Stage race. You need not race nor complete every stage of the Points-based races. Prices and price increases are visible on BikeReg. No day-of registration is available.

9. AMATEUR VENUES

- Still Properties Waterville Road Race
- Mission Ridge Ski and Board Resort Mass start Hill Climb
- Rookard Pools Wenatchee Twilight Criterium
- Arlberg Sports Plain Road Race

10. FOREIGN RIDERS

Canadian riders must present a UCI license. Provincial licenses are not accepted.

Other foreign riders must present a UCI license and a signed “Foreign Permission Letter” from their federation that contains the following information: 1. Name (as it appears on Passport)

2. Team or club name

3. Nationality

4. UCI ID number

5. A statement that the rider has permission to race in the United States from (date of entry) through (date of exit)

6. A statement that the rider is covered with medical insurance for incidents in the USA during this period.

Without the Foreign Permission letter, the foreign rider acknowledges that they are solely responsible for their medical expenses.

11. TEAM PARTICIPATION

Tour de Bloom is a team-limited event. **Race fields** are limited to a maximum of 10 riders per team. If a field has fewer than 100 riders registered 30 days before the event, the limit may be increased to a maximum of 12 riders per team.

Tour de Bloom - Regulations

12. IDENTIFICATION NUMBERS

A timing chip and two bib numbers will be issued per rider. The chip and both numbers must be worn in all stages. Chips must be returned by the end of the final stage. **Lost chip fee: \$100.** It is forbidden to fold, cut, or mutilate bib numbers. Riders must ensure their numbers are always visible, properly placed, and readable during the event. Bib numbers that cannot be read may result in time or points penalties.

Bib numbers are to be placed parallel with and just above the side seam of the jersey, positioned as in the following:



13. TECHNICAL SUPPORT

Road race wheel support is “wheels in wheels out” unless enough wheels are provided per race start. The race officials will announce if wheel support is “neutral”. **Racers are encouraged to bring extra wheels and tools to change wheels. It’s also advised to carry a spare tube and air cartridge or pump.** Clearly mark your set of wheels with your bib number’s tear tags before leaving them with the wheel vehicle. Do not leave wheels for support vehicles in bags!

Additional support at the Criterium is provided by Elite Racing Neutral Support Services.

14. FEED/LITTER ZONES

Feed zones for Road stages will be provided depending on the distance each group is racing. Hand-ups to riders must occur within the feed zone from the RIGHT side of the road only, with feeders keeping to the road shoulders.

15. CONTROLS & SIGNAGE

The races will start by whistle or countdown clock and tones. Feed/litter zones will be marked with “Begin Feed” and “End Feed”. This is the *only* location on road courses where bottles and trash may be deposited.

The 200-meter sign indicates the location for full use of the road at the Finish only for all categories (**Waterville Road Race only**).

16. PENALTIES

The USA Cycling scale of penalties as they apply to stage races is entirely applicable to this event. Time penalties may be applied to the Stage, to General Classification, or to Team GC. Points penalties will be subtracted from the total points.

17. CENTERLINE REGULATION

The Centerline Regulation is in effect for all stages. It is forbidden to cross the centerline. **Advancing across the centerline may result in a time penalty, relegation, or Disqualification.**

18. STARTS AND SIGN-IN

Competitors must sign in at the assembly point of each race. Sign-in opens one hour and 10 minutes before the start and closes 10 minutes before each stage. Riders not taking the start are to inform the Chief Judge before the start of the stage.

Ten minutes before the start of each stage the competitors leading the GC will be called to the front of the starting line. Additional riders may be selected to participate in this recognition.

19. POINTS STAGE RACES

The following are a points-based stage race:

- Women 4/Novice
- Men 4/Novice
- **Master B:** 40+ 4/N, 50+ 3/4/N, & 60+ Open

Sign-in is mandatory. Riders failing to sign in and who’s chip is not recorded in the race will be listed as “DNS” (Did Not Start) in the race results and receive a points penalty equal to first place points.

Intermediate Bonus Points will be awarded to a group racing together without regard to separating the categories. Only one set of intermediate points is available for a group.

Finishing points are allocated to each race age category to be scored separately, based on order of finish.

There is no time limit to finish a race. However, riders not arriving before the Broom will be listed as DNF with no place earned.

Tour de Bloom - Regulations

19.1. POINTS ALLOCATION

Points will be allocated per the following table:

Place	RR	Hill Climb	Criterion	Intermediate Bonuses
1	30	20	20	3
2	27	18	18	2
3	24	16	16	1
4	22	14	14	
5	20	12	12	
6	18	10	10	
7	16	9	9	
8	14	8	8	
9	12	7	7	
10	11	6	6	
11	10	5	5	
12	9	4	4	
13	8	3	3	
14	7	2	2	
15	6	1	1	
16	5			
17	4			
18	3			
19	2			
20	1			

The GC Leader is the rider with the most points earned. In the case of a tie, the following will be applied until the tie is broken:

1. Most stage wins (firsts)
2. Most second place finishes
3. Most third-place finishes
4. Highest placing in the last stage held

20. TIMED STAGE RACES

The following categories are stage races on time with an Individual General Classification.

- Men 2/3
- **Master A:** 35+ 1/2/3 & 50+ 1/2/3
- Women 2-3-4 & Women Masters 35+ 1-2-3-4

The competitor with the lowest cumulative time for all stages is the GC Leader. The General Classification includes any penalties assessed by the Race Jury minus time bonuses awarded.

In the event of a tie on time, the following will be applied until the tie is broken:

1. Sum of the stage placings.
2. Place obtained in the last stage ridden.

20.1. TIMING PROCEDURES

Timing procedures will follow the USA Cycling rules for stage races.

For the combined races, a new time will be assigned without regard as to whether the rider is in the same or a different age group.

20.2. BONUSES

Time bonuses will be awarded at the finish of all races.

Intermediate bonuses go to the 3 leaders of the group.

Finishing bonuses in Masters A go to the top 3 in both age groups: 35+ and 50+.

Bonuses	1 st	2 nd	3 rd
Int Sprint	3"	2"	1"
Finish	10"	6"	4"

20.3. FINISHING LIMITS

Considering the characteristics of each stage, the finishing time limits set for each category appear in the Technical Summary of each stage. If no time limit is set for a category riders must finish before the sweep vehicle crosses the finish line.

In exceptional cases only (force majeure) the Race Jury may with the agreement of the Organizer extend the finishing time limits.

21. MISHAPS IN THE FINAL 3KM

Riders who suffer a mishap in the last 3km of a road stage or after free laps have ended in the Criterion will be given the same finish time as the riders they were with at the time of the mishap, provide the mishap was observed or otherwise verified by a race official, and the rider shows a will to finish the race if able to do so. Riders are to make their situation known to the race officials at the Finish Line. The rider will be given their actual place across the finish line, or last in the stage if the rider is unable to finish.

This rule shall not apply in the case of hill climb finishes:

- Mission Ridge Ski and Board Resort Mass start Hill Climb Stage 2
- Arlberg Sports Plain RR Stage 4

In all cases regarding qualifications, the Race Jury shall decide on any discussions concerning "hill climb finish".

22. RESULTS

Results will be emailed to participants by category to the email provided during registration. They will be posted to TourdeBloom.com on the Results page.

Protests on the order of finish, points, and timing must be submitted to the Chief Judge no later than 1 hour before the start of the next stage. Protests for the final stage and General Classification (Time or Points) must be submitted to the Chief Judge within 15 minutes after being posted online.

Tour de Bloom - Regulations

Changes made to the results after the Awards and payout have taken place will only revise the results as submitted to USA Cycling. No changes to the prize list will be made after that time.

Protests on field of play decisions must be written, accompanied by a \$20 fee, and filed with the Chief Referee. If the protest is upheld the fee shall be refunded. If it is denied, the fee will be submitted to the USA Cycling Jr Development Fund.

23. MISSION RIDGE SKI AND BOARD RESORT MASS START HILL CLIMB SPECIAL REGULATIONS

The hill climb is a mass start event, but the climb will test your legs! Timing starts with the group's start, but each rider gets their own finish time (to the second only).

23.1. EQUIPMENT

This is not a time trial. All categories are restricted to standard mass-start road racing bicycles only.

23.2. SUPPORT

No vehicles are permitted to follow. Neutral support will be available at the Start area for mechanical assistance.

24. AWARDS CEREMONIES

Awards ceremonies will be held for each category. All riders are to report to the podium area as soon as the top 10 finishers for the stage have been recorded.

The following must attend the official Stage award ceremony:

1. The first three finishers of the stage
2. The General Classification Leader (Time or Points)

After the conclusion of the final stage the following must attend the Awards Ceremony immediately after the finish of the race:

1. The first three finishers of the stage
2. The first three in General Classification (Time or Points)
3. "Best of" categories

25. MEDIA

Photographers wishing access to the course and finish areas are to contact the Race Organizer. **Photographers are to wear a high visibility safety vest while on the course. A green or orange vest is required to take photos on course past the Finish line.** Photographers must travel opposite the race and are to remain behind the photographer's zone past the finish line on race finishes. Drones must be arranged in advance with the organizer and may not fly closer than 5m to riders or spectators.

26. ANTI-DOPING

USA Cycling anti-doping regulations are entirely applicable to the event. USADA may perform anti-doping testing for any category unannounced. Riders selected will be escorted to the doping control station by chaperone.

Special thanks to our Tour de Bloom Jersey Sponsor!



JAKROO

Tour de Bloom - Regulations

27. PRIZES

Merchandise will be awarded to the winners of each stage as follows:
Separate awards are as indicated below.

Category	Winner Waterville	Winner Hill Climb	Winner Crit	Winner Plain	GC Overall
Men 2-3 *	Cowboy Hat	Sunglasses	Buckle	Hatchet	Jersey & Brooks Saddle
Master A:					
Master 35+ 1-2-3 *	Cowboy Hat	Sunglasses	Buckle	Hatchet	Jersey & Brooks Saddle
Master 50+ 1-2-3 *	Cowboy Hat	Sunglasses	Buckle	Hatchet	Jersey & Brooks Saddle
Men 4/Novice	Cowboy Hat	Sunglasses	Buckle	Hatchet	Jersey & Brooks Saddle
Master B:					
Master 40+ 4-5 **	Cowboy Hat	Sunglasses	Buckle	Hatchet	Jersey & Brooks Saddle
Master 50+ 3-4-5 **	Cowboy Hat	Sunglasses	Buckle	Hatchet	Jersey & Brooks Saddle
Master 60+ Open **	Cowboy Hat	Sunglasses	Buckle	Hatchet	Jersey & Brooks Saddle
Women 2-3 -4/ 35+ 1-2-3-4*	Cowboy Hat	Sunglasses	Buckle	Hatchet	Jersey & Brooks Saddle
Master 35+ 1-2-3 **					Jersey & Brooks Saddle
Women 4-Novice *	Cowboy Hat	Sunglasses	Buckle	Hatchet	Jersey & Brooks Saddle

* Jersey awarded daily for Overall category leader

** Master B and Women Masters: GC "Best of" Winner Jerseys are awarded only on the final day .

28. RACE RESTAURANTS

The Wenatchee Valley features dozens of restaurants and cafes. These restaurants are our featured race supporting restaurants for Tour de Bloom. **MAKE YOUR RESTAURANT CHOICE WITH OUR SPONSORS!**



WENATCHEE VALLEY BREWING COMPANY

108 E. Island View St.
Wenatchee, WA 98801
509-881-4529

wenatcheevalleybrewingco.com

GARLINI'S NAPOLETANA

212 Fifth St.
Wenatchee, WA 98801
509-884-1707

garlinisrestaurant.com

McGLINN'S PUBLIC HOUSE

111 Orondo Ave.
Wenatchee, WA 98801
509-663-9073

www.mcglinns.com/



WOK-ABOUT GRILL WENATCHEE

110 N Wenatchee Ave
Wenatchee, WA 98801
509-662-1154

WOK-ABOUT GRILL LEAVENWORTH

920 Front St.
Leavenworth, WA 98826
509-548-9652

MELA COFFEE ROASTING CO.

17 N. Wenatchee Ave
Wenatchee, WA 98801
509-888-0374

Monday - Saturday 7am-6pm,
Saturday - Sunday 8am-4pm

melacoffee.com



Tour de Bloom - Regulations

29. MEDICAL HOSPITALS AND MEDICAL

Medical services will be available near the Finish line of each stage. Look for the "Red Cross" sign. Locations may also be indicated on the course maps.
In the case of an emergency, call 911.

Hospital:

Central Washington Hospital.
1201 S. Miller St
Wenatchee WA 98801

Plain:

Cascade Medical Center
817 Commercial Street
Leavenworth, WA 98826
Phone: +1-509-548-5815

Medical Lead:

Tom Ettinger MD



Tour de Bloom – Stage 1



STAGE 1 - WATERVILLE ROAD RACE										
Categories	Sign-in Open	Start	Mts Lap	Pts Lap	TB Lap	Feed on Laps	Total Laps	Miles	Est. MPH	Limit
UCI Women Elite	7:50-8:50	9:00	1,2	1, F	1,F	2	2	58	22.9	25%
Master B	8:05-9:05	9:15		1,F		2	2	58	23.9	Broom
Women 2-3 / 35+ 1-2-3	8:15-9:15	9:25			1,F	2	2	58	21.5	Broom
Women 4-Novice	8:20-9:20	9:30		F		n/a	1	29	20.3	Broom
<i>BREAK</i>										
Elite Men P-1-2	12:05-13:05	13:15	1,2,3	1,2,F	1,2,F	2,3	3	87	27.6	20%
Master A	12:15-13:15	13:25			1,F	2	2	58	24.0	Broom
Men 2-3	12:25-13:25	13:35			1,F	2	2	58	23.4	Broom
Men 4/Novice	12:30-13:30	13:40		1,F		2	2	58	22.4	Broom

Friday May 2

Time Limit:

Points Stage Race: Riders not getting to the finish line before the broom wagon or who take the broom wagon to the finish will be placed last on the stage according to distance ridden. Riders abandoning on their own accord will be listed as DNF and will not receive a place.

Timed Stage Race - Broom: Riders not getting to the finish line before the broom wagon or who take the broom wagon to the finish will be given the time of the slowest rider in their wave plus a 10-minute penalty and may start the next stage. Riders abandoning on their own accord will be listed as DNF.

Course Description: The Still Properties Waterville Road Race incorporates roads in the classic Waterville wheat country. This course is flat with rollers, but don't be deceived into thinking it's an easy task! The wind just may play a role in the outcome. The "Town Loop" is approximately 9 miles long and passes through downtown Waterville on Main Street. The "Country Loop" is roughly 20 miles long and includes the classic elements of our usual course. **RIDE WITH GPS LINK**

Tour de Bloom – Stage 1

Stage Notes

Driving Directions to Fairgrounds: Take Wenatchee Avenue. Head north 3 miles. Continue on Hwys 2/97 East for two miles. Cross the Columbia River on the Odabashian Bridge. Turn LEFT at the intersection of Hwy 28 (Sunset Highway) to go north on Hwys 2/97 about 11 miles. Take the Hwy 2/Waterville exit. Continue 9.5 miles to Waterville. Take a left of Columbia off of HWY just past Gas station. Take right on 3rd, this takes you to NCW Fairgrounds.

Parking: Racer Parking is prohibited on city streets and at the High School. Free team/rider parking is at NCW Fairgrounds, 601 N. Monroe St. 509.745.8480 The bathrooms in the campground will be available. **The campground is not available for free parking.** If desired, overnight camping (full hookups) must be arranged directly with the fairgrounds. Contact Carolyn: 509 745 8480.

Start: Waterville High School, 200 Birch St., Waterville, WA

Sign-In: Start line

Staging: Waterville High School Lower Parking lot, 200 E Birch

Feed zone: 10.3 miles into course. Feeding only on laps as above. In the case of extreme temperatures and conditions, at the discretion of the Chief Referee and Race Director and when announced at the start, water hand-ups from the race caravan *may* be available.

Final Sprint: Open course from W Beech St to the Finish – final 200M. 3K rule is in effect.

Podium: 30 min after finish of top 3 on stage. Waterville HS parking lot

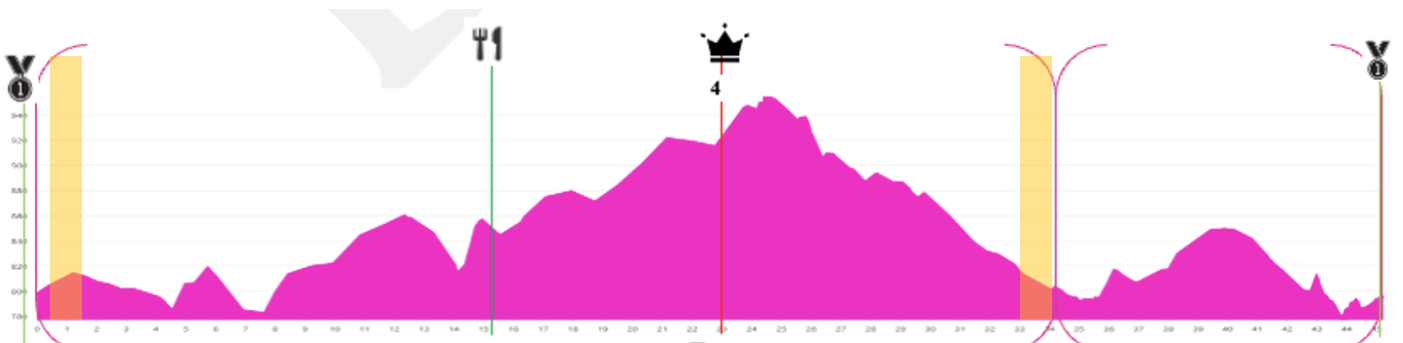
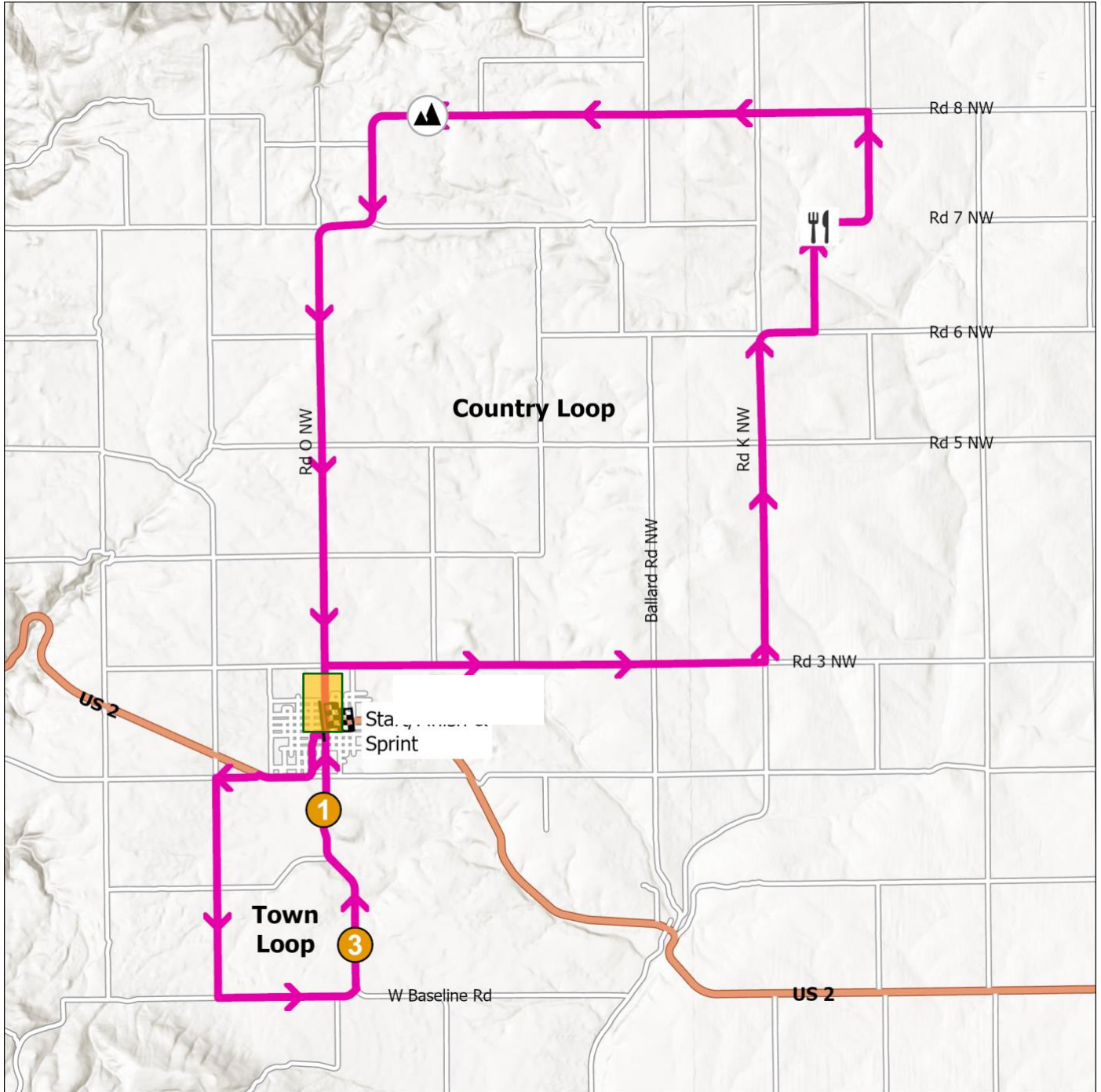
STAGE 1 WATERVILLE ROAD RACE START LOCATOR MAP



Tour de Bloom – Stage 1

STAGE 1 STILL PROPERTIES WATERVILLE ROAD RACE COURSE MAP

Ride with GPS map and detailed notes [here](#).



Tour de Bloom – Stage 1

Cue Sheet Waterville Road Race

	1 Lap		1 Lap		2 Laps		3 Laps	
	0 km	0 mi	23 mph	28 mph	23 mph	28 mph	23 mph	28 mph
Start line								
Continue onto North Chelan Avenue, US 2	0.3	0.2	0:00	0:00	1:19	1:04	2:38	2:09
CAUTION: Bi-directional race traffic. Keep right!	0.3	0.2	0:00	0:00	1:19	1:04	2:38	2:09
Continue onto North Chelan Avenue	0.5	0.3	0:00	0:00	1:19	1:05	2:39	2:09
Turn right onto Road 3 Northwest	1.3	0.8	0:02	0:01	1:21	1:06	2:40	2:10
End Bi-directional race traffic					1:19	1:04	2:38	2:08
Turn left onto North Douglas Road	7.9	4.9	0:13	0:10	1:32	1:15	2:51	2:19
Continue onto Road 6 Northwest	12.6	7.8	0:21	0:17	1:40	1:21	2:59	2:26
Turn left onto Road J.5 Northwest	13.4	8.3	0:22	0:18	1:41	1:22	3:00	2:27
Feed Zone and Green Zone Laps 2 and 3	15.1		n/a	n/a	1:44	1:25	3:03	2:30
Turn left onto Road 8 Northwest	17.2	10.7	0:29	0:23	1:48	1:28	3:07	2:32
Elite: Mts Cat 4 climb all laps	23.0	14.3	0:39	0:31	1:58	1:36	3:17	2:40
Continue onto Road 7 Northwest	26.1	16.2	0:44	0:36	2:03	1:40	3:22	2:44
Turn slight left onto Road O Northwest	26.7	16.6	0:45	0:36	2:04	1:41	3:23	2:45
CAUTION: Bi-directional race traffic. Keep right!	33.0	20.5	0:55	0:45	2:15	1:50	3:34	2:54
Continue onto North Chelan Avenue, US 2	34.0	21.1	0:57	0:46	2:16	1:51	3:35	2:55
End Bi-directional race traffic	34.0	21.1	0:57	0:46	2:16	1:51	3:35	2:55
End Country Loop	34.1	21.2	0:57	0:47	2:16	1:51	3:36	2:56
Turn right onto West Locust Street, US 2	34.1	21.2	0:57	0:47	2:16	1:51	3:36	2:56
Turn left onto East Park Street, US 2	34.4	21.4	0:58	0:47	2:17	1:52	3:36	2:56
Turn left onto Road 2 Northwest	35.7	22.2	1:00	0:49	2:19	1:53	3:38	2:58
Turn left onto Road P Northwest	36.4	22.6	1:01	0:50	2:20	1:54	3:39	2:59
Turn left onto West Baseline Road	39.6	24.6	1:07	0:54	2:26	1:59	3:45	3:03
Turn left onto Road O Northwest	41.7	25.9	1:10	0:57	2:29	2:02	3:48	3:06
Final lap - Deviation Turn RIGHT on East Elm St.	44.9	27.9	1:16	1:02	2:35	2:06	3:54	3:10
Finish Line & Elite Intermediate Sprint all laps	46.7	29	1:19	1:04	2:38	2:08	3:57	3:13
End Town Loop	46.7	29	1:19	1:04	2:38	2:08	3:57	3:13

Tour de Bloom – Stage 2



STAGE 2 - MASS START HILL CLIMB			
Categories	Start	Finish Bonus	Time Limit
Men 2-3	9:00	10"-6"-4"	1 hr
Master A: 50+ 1-2-3 *	9:05	10"-6"-4"	1 hr
Master A: 35+ 1-2-3 *	9:10	10"-6"-4"	
Men 4/Novice	9:15		n/a
Women 2-3 / 35+ 1-2-3	9:20	10"-6"-4"	1 hr
Master B: 40+ 4-5	9:25		
Master B: 50+ 3-4-5 *	9:30		n/a
Master B: 60+ Open *	9:35		
Women 4-Novice	9:40		n/a
UCI Women Elite	n/a		
Elite Men P-1-2	n/a		
Saturday May 3			

Course Description: The Mission Ridge Ski and Board Resort Mass start Hill Climb starts at Squilchuck State Park and finishes at Mission Ridge Ski Area. This is the last segment of the UCI/Pro race. A 4 mile climb that takes you to the Mission Ridge Ski and Board Resort! Fantastic views as you gulp for Oxygen! Check out Graffiti Rock as your HR bounces off the 2 Bills mark! 4.25 miles. 1700'+. Mass start. **RIDE WITH GPS LINK**

Start Times: Start times will be consecutive, allowing 5 minutes between groups. Masters A and B: Race separately and scored separately for this stage.

Finish Times: Each rider will receive their time across the finish line without any consideration of "bunch times". This is run like a mass-start time trial with timing to the second. Fractions of a second will not be considered.

Stage Notes

Driving Directions: Google Mission Ridge Ski Resort.

Parking: Parking for the Mission Ridge mass-start hill climb is at the finish line area at Mission Ridge Ski area. Ride downhill to the start area. Parking is also available at the starting location of Squilchuck State Park; however, a State Parks Discover pass or the purchase of a daily parking pass at the cost of \$10 in cash or check is required for use. Tour De Bloom will provide for the transportation of any cool weather or warmup gear needed to make the decent from the start area back to the finish area, but the organizer is not responsible for missing or left behind items.

Sign-in: Start area near the entrance to Squilchuck State Park and Mission Ridge Road

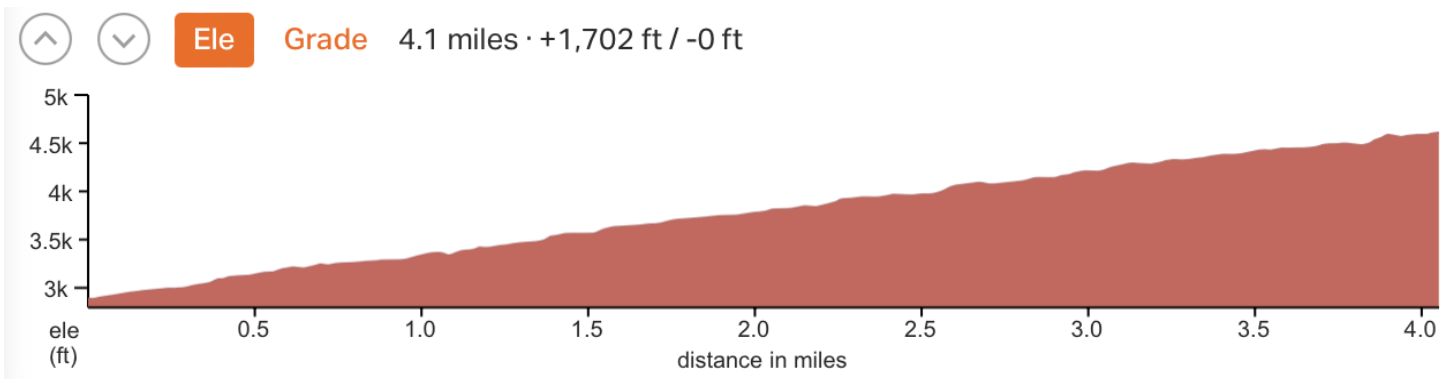
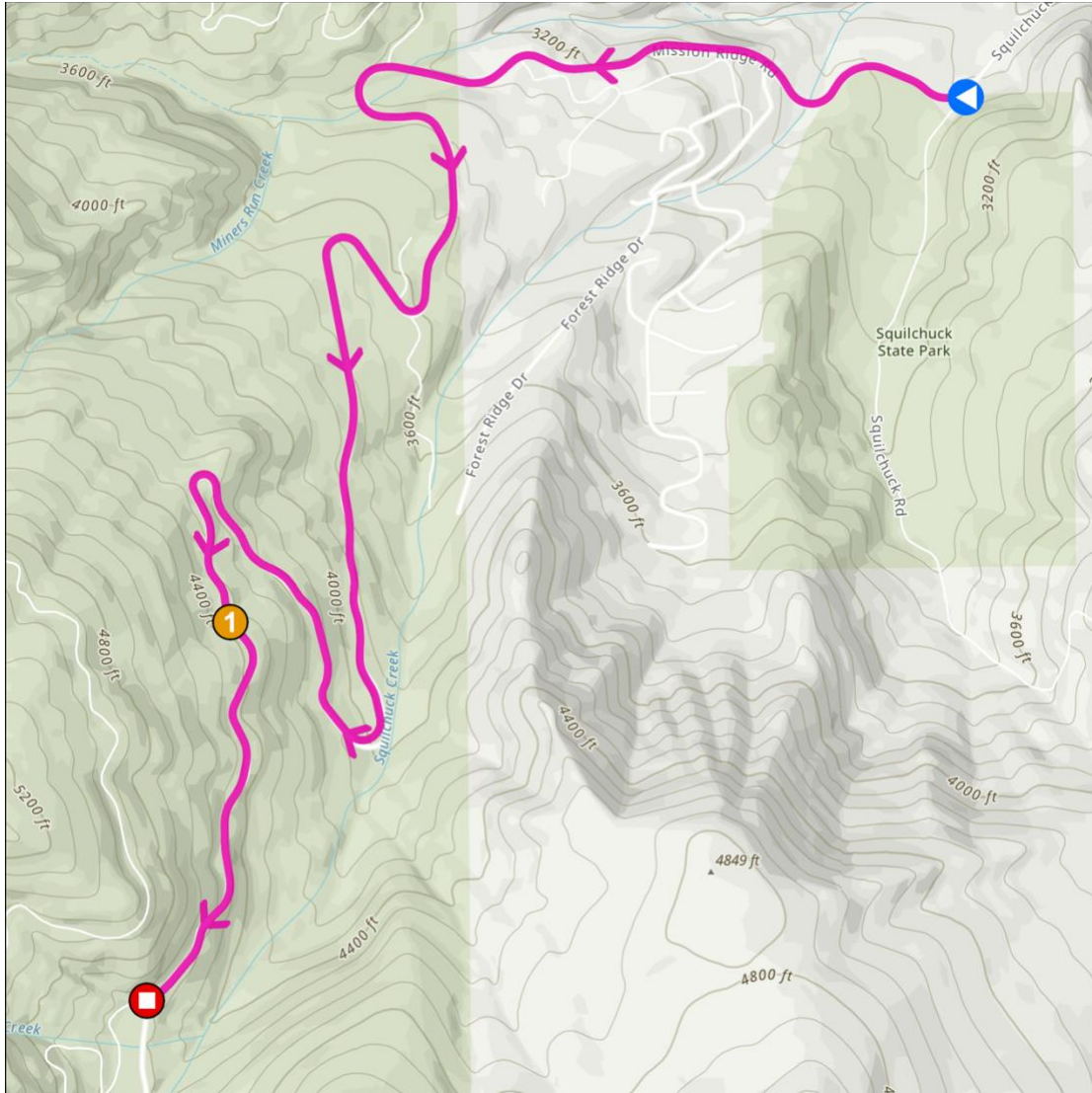
Wheel Support: Near the start only.

Medical: Near the Start area

Podium: Start of Criterium – Call-ups. Pick up the jersey at sign-in for the Criterium.

Tour de Bloom – Stage 2

STAGE 2 MISSION RIDGE SKI AND BOARD RESORT MASS START HILL CLIMB COURSE MAP



Tour de Bloom – Stage 3



STAGE 3 - WENATCHEE TWILIGHT CRITERIUM					
Categories	Sign-in Open	Start	Points/TB Laps	Time	Time limit
Women 4-Novice	14:00	15:00	na	0:20	
Master B	14:30	15:30	na	0:25	
Men 4/Novice	15:05	16:05	na	0:25	
Women 2-3 / 35+ 1-2-3	15:40	16:40	F	0:30	15%
Men 2-3	16:20	17:20	F	0:45	15%
Master A	17:15	18:15	F	0:45	15%
<i>Fat Tire Crit: Women / Men</i>		19:05		0:30	
UCI Women Call-ups	18:35	19:45		0:05	
UCI Women Elite Race		19:50	3 Int, F	0:55	12%
UCI Women Elite Podium - Criterium		20:50		0:10	
Elite Men Call-ups	20:00	21:00		0:05	
Elite Men P-1-2		21:05	3 Int, F	1:00	12%
<i>Elite Men Podium - Criterium</i>		22:10	F		
Saturday May 3					

Course Description: The Rookard Pools Downtown Criterium is a 1KM 4-corner rectangular course in the heart of historic Wenatchee over a six-block loop. A large beer garden near the Finish Line attracts hundreds of spectators renowned for donating primes!

Free Laps: Up to two laps *may* be awarded riders suffering mishaps in the Criterium. A recognized mishap is a fall, a puncture, or breakage of an essential component of the bicycle. Riding backwards on the course is prohibited. Free lap eligibility ends when 8 laps to go are displayed on the lap board.

Lapped riders may be removed from the race by the Chief Referee near the Finish line.

- **Points Stage Race:** All riders will be placed according to the distances covered and order across the line. Riders not starting will be listed as “DNS” and will receive a points penalty equal to first place.
- **Timed Stage Race:** Such removed riders will receive a pro-rated time and place. Stage race riders who have been so removed may start the next stage if their calculated time is within the time limit. Riders injured in a crash and unable to continue may be given a pro-rated time and allowed to start the next stage.

Riders dropping out without being removed by the Chief Referee will be listed as “DNF”. Stage Race riders listed as DNF will not be allowed to start the next stage.

Tour de Bloom – Stage 3

Stage Notes

Parking: Off street parking lots along Columbia Street, one block east of criterium course

Sign-in: Near announcers at Finish line on Wenatchee Ave.

Staging: Arrive at the start no later than 10 minutes before your start time.

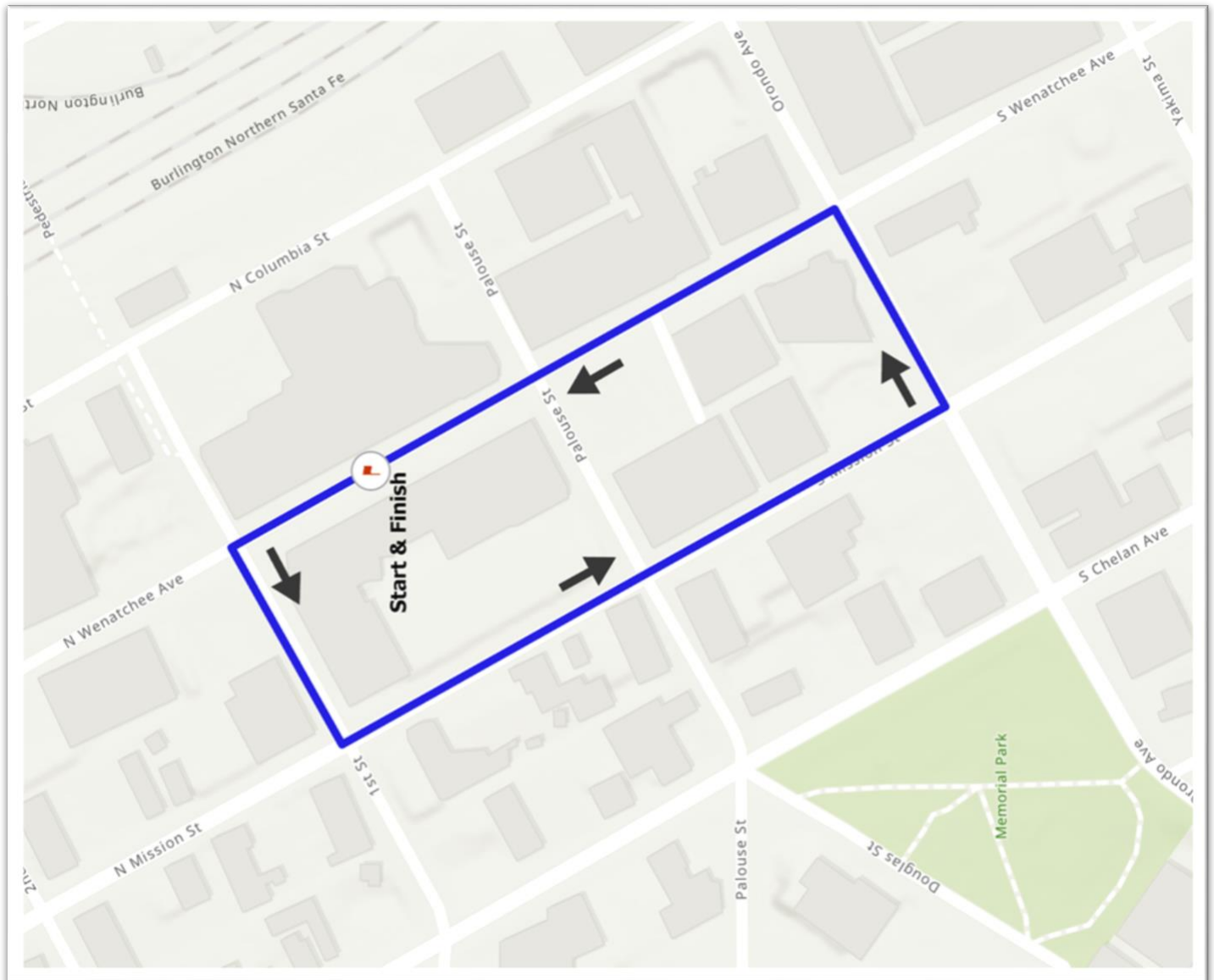
Start/Finish: Wenatchee Ave between Palouse and First Streets

Pit: Wenatchee Ave, south of (before) the Start/Finish line.

Medical: Wenatchee Ave and Palouse Street

Podium: Immediately after the finish of each race, near the Finish line.

STAGE 3 CRITERIUM COURSE MAP



Tour de Bloom – Stage 4



STAGE 4 - PLAIN ROAD RACE								
Categories	Sign-In	Start	Mt C1	Bonus	Feed Laps	Total Laps	Miles	Limit
UCI Women Elite	7:45-8:50	9:00	F	F	2	2	50.7	15%
Master B	8:05-9:05	9:20		F	2	2	50.7	Broom
Women 2-3 / 35+ 1-2-3	8:10-9:10	9:25		F	2	2	50.7	Broom
Women 4-Novice	8:15-9:15	9:30		F	n/a	1	26.2	Broom
BREAK								
Elite Men P-1-2	11:45-12:45	13:00	F	F	2,3	3	75.2	12%
Men 2-3	11:55-12:55	13:10		F	2,3	3	75.2	15%
Master A	12:00-13:05	13:20		F	2,3	3	75.2	15%
Men 4/Novice	12:05-13:10	13:25		F	2	2	50.7	20%
Sunday May 4								

Course Description: The Arlberg Sports Plain Road Race will start and finish near Plain Cellars in the bustling village of Plain. This year's edition utilizes roads north and west of Plain, including some along the north shore of scenic Lake Wenatchee. [GPX Files](#)

Stage Notes

Directions from Wenatchee: Plain is off Hwy 2 a short distance from Coles Corner. Right on Hwy 207 (Chumstick Canyon Road) to Plain.

Parking: off-street at Plain Cellars, 18749 Alpine Acres Road, Plain, WA 98826. NO PARKING AT FINISH LINE OR PLAIN BUSINESSES!!

Sign-in: Plain Cellars, 18749 Alpine Acres Road. Opens 1hr 10 before the starts and closes 10 min before.

Start: near Plain Cellars in the village of Plain

Feed Zones: Near Cedar Crest. Please do not throw bottles/litter into the ditch. Clean up after yourselves.

CAUTION! Some race traffic is bi-directional!

Hillclimb finish: about 1.77km before the finish line, intersection of Camp 12 Rd and Chumstick Highway.

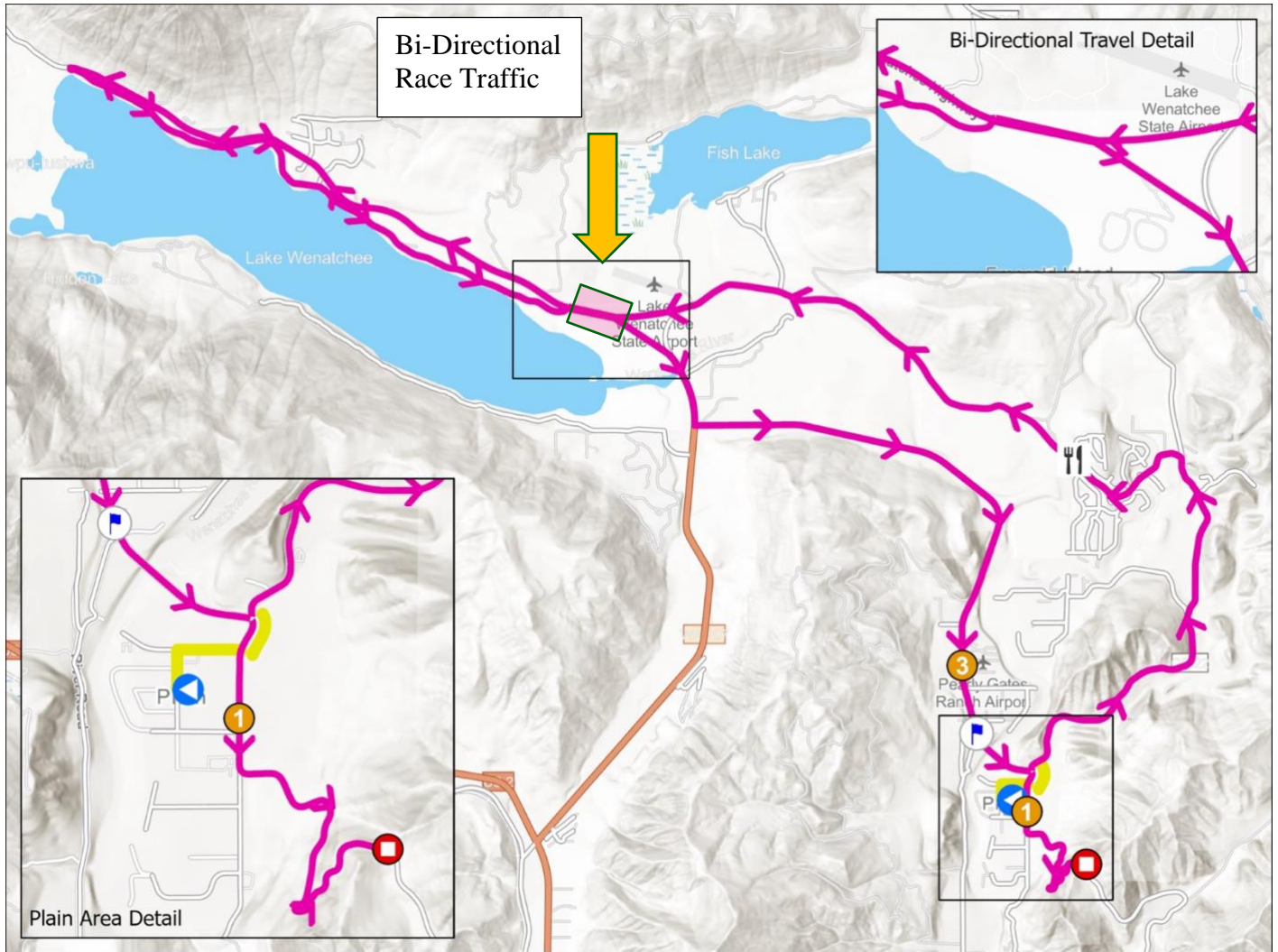
Finish: Near the top of Beaver Hill. 3K rule does not apply to this stage.

Medical: Tent at Plain Cellars

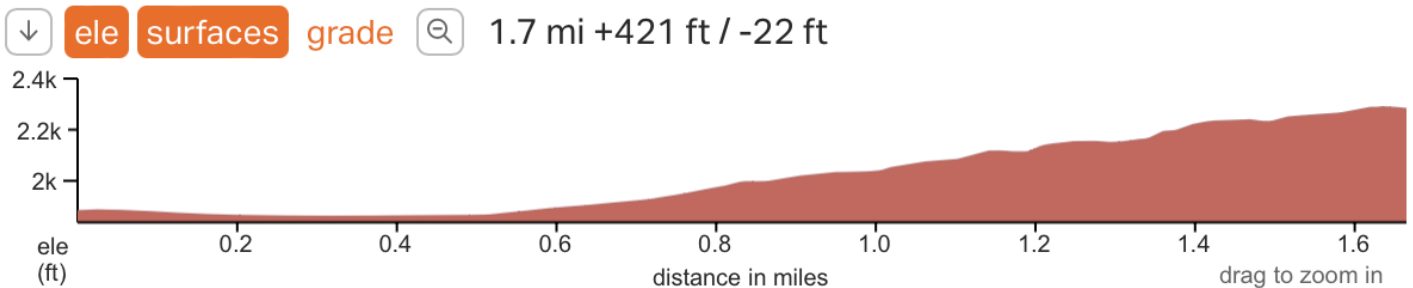
Podium: Plain Cellars, 15-20 min after the first riders finish.

Tour de Bloom – Stage 4

Arlberg Sports Plain Road Race - Course Map



Course Profile for two laps. Red lines are approximate circuits.



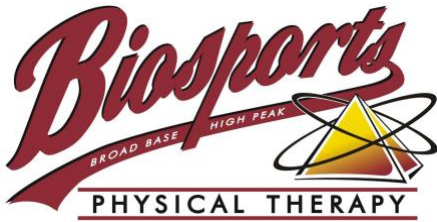
FINAL CLIMB FROM TURN

Tour de Bloom – Stage 4

Cue sheet Stage 5 Plain Road Race

	1 lap	2 laps	3 laps
Neutral Section from Start			
Go straight on Alpine Acres Road	0.0		
Turn right onto Chapel Drive	0.2		
Turn left onto Beaver Valley Road	0.4		
Turn left to continue on Beaver Valley Road	0.5		
Begin Circuit	0	24.5	49
Take the right fork to Chiwawa Loop Road	0	24.5	50.3
FEED ZONE/GREEN ZONE		28.7	54.5
Keep right onto Wye Connector Road	8.2	32.7	57.2
Begin bi-directional race traffic. Keep right.	8.7	33.2	57.7
Turn slight right onto Lake Wenatchee Highway	8.7	33.2	57.7
End bi-directional race traffic.	9.0	33.5	58.0
Turn sharp left onto North Shore Drive	13.5	38	62.5
Begin bi-directional race traffic. Keep right.	18.1	42.6	67.1
Turn right onto Lake Wenatchee Highway	18.1	42.6	67.1
End bi-directional race traffic.	18.5	43.0	67.5
Turn right onto Beaver Valley Road	19.6	44.1	68.6
Intermediate Sprints – Lap 1 @ Lk W. Vly. Fire & Rescue		24	48.5
Turn left onto Chiwawa Loop Road – Begin next circuit	24.5	49	73.5
End of Circuit 1	24.5		
End of Circuit 2		49	
End of Circuit 3			73.5
Continue STRAIGHT on Beaver Valley Road	24.5	49	73.5
Veer left on Beaver Valley Road	24.9	49.5	74
Begin Category 3 climb	25.4	50	74.5
Finish Category 3 Climb Elites	26.2	50.7	75.2

Tour de Bloom – Sponsors



Tour de Bloom – Foreign Permission Letter

Date: _____

To Whom it May Concern:

The following rider is a currently licensed member in good standing of the _____ Federation and is granted permission to race in the United States of America from May 2, 2025 through May 6, 2025 at the following event(s): The Tour de Bloom, held in Washington State.

Name:

UCI ID:

Nation:

Team/Club:

Category:

Class:

The Cycling Federation (or rider, if not Federation issued) further certifies (check one):

- The rider is covered by medical insurance for racing in the United States.
- The rider is NOT covered by medical insurance for racing in the United States and will provide proof of additional insurance.
- The rider is NOT covered by special medical insurance for racing in the United States and accepts all risk and liability for racing in the United States. The rider is solely responsible for all their medical expenses and other damages which may be incurred by them or to them while racing in the US. Furthermore, the USA Cycling Standard Release Form will be signed by them and is binding under law.

Sincerely,

(signature)

Printed Name

This document is to appear on Federation letterhead. It may be emailed or presented as a printed version. All fields above are to be completed. It must be signed by Federation staff granting permission.

USAC Upgrade Policy IV

The following table is from USA Cycling Policy IV concerning upgrades. It is for reference only. Upgrades can be requested from your USA Cycling account – “My Licenses” – “Request Upgrade”.

ROAD UPGRADES				
NOVICE	CAT 4	CAT 3	CAT 2	CAT 1
UPGRADE ELIGIBLE → <ul style="list-style-type: none"> 5 Finishes in Road Races or Criteriums or Clinics 	UPGRADE ELIGIBLE → <ul style="list-style-type: none"> 20 Points in 36 Months 20 Pack Finishes (may include 3 Gran Fondos / Gravel Events) 	UPGRADE ELIGIBLE → <ul style="list-style-type: none"> 30 Points in 36 Months 	UPGRADE ELIGIBLE → <ul style="list-style-type: none"> 35 Points in 36 Months 	ELIGIBLE FOR → <ul style="list-style-type: none"> Domestic Elite Team Division 2 Team World Tour Team UCI Races National Team
MANDATORY → <ul style="list-style-type: none"> 10 Points in 12 Months 	MANDATORY → <ul style="list-style-type: none"> 30 Points in 12 Months 3 Wins in a Field with 21+ Starters in 12 Months 	MANDATORY → <ul style="list-style-type: none"> 40 Points in 12 Months 3 wins in a Field with 21+ Starters in 12 Months 	MANDATORY → <ul style="list-style-type: none"> 50 Points in 12 Months 3 Wins in a Field with 50+ Starters in 12 Months 	

UPGRADE POINTS FOR MASS START RACES

PLACE	5-10 STARTERS	11-20 STARTERS	21-49 STARTERS	50-69 STARTERS	70+ STARTERS
1	3 pts	7 pts	8 pts	10 pts	11 pts
2	2 pts	5 pts	6 pts	8 pts	10 pts
3	1 pts	4 pts	5 pts	7 pts	9 pts
4		3 pts	4 pts	6 pts	8 pts
5		2 pts	3 pts	5 pts	7 pts
6		1 pts	2 pts	4 pts	6 pts
7			1 pts	3 pts	5 pts
8				2 pts	4 pts
9				1 pts	3 pts
10					2 pts
11					1 pts